

Distribution box M8

2-row



MVP8

8-way

pre-wired cable

page 1.13.1



MVP8

8-way

screw-plug terminals
spring clamp terminals

page 1.13.2



MVP8

8-way

plug connection M16

page 1.13.2

Distribution box M8

single-row

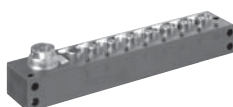


MVPS8 single-row

4-, 6-, 8-, 10-way

pre-wired cable

page 1.13.3



MVPS8 single-row

4-, 6-, 8-, 10-way

plug connection M16

page 1.13.4

Distribution box for sensors and actuators

- with terminals for field-wiring
- inline attachment to assembly profile

MVP8

8-way
with pluggable connection cap



MVP8

8-way
with connection cap



Approvals: 

Contact layout

General:

- Contact 1: (+)
Contact 3: (-)
Contact 4: (N/O)

M8 female
3-pole



M8 female
3-pole



with LED for PNP-signals 24 V DC

Distribution box 8-way		Art.-No.	Art.-No.
Connection cable	Cable length		
PUR/PVC	3.0 m	3827580	3827570
8 x 0.34/2 x 0.75 mm ²	5.0 m	3827581	3827571
	10.0 m	3827582	3827572
	15.0 m	3827583	3827573

Accessories

		Art.-No.
Blind plug for empty sockets	plastic	3858627
Label plates	1 strip = 22 pieces, (Murrplastik KPX 5/10-5)	996047

Notes

Other versions on request.
Technical data from chapter 1.2. onwards.

Distribution box for sensors and actuators

- with terminals for field-wiring
- with plug connector M16
- inline attachment to assembly profile

MVP8

8-way
with pluggable connection cap
screw-plug terminals



MVP8

8-way
with connection cap
spring clamp terminals



MVP8

8-way
with plug connector M16



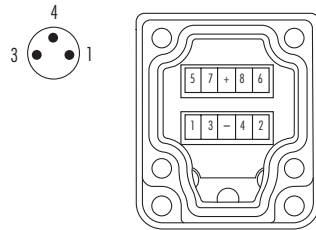
Approvals:

Contact layout

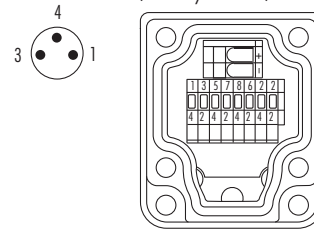
General:

- Contact 1: (+)
Contact 3: (-)
Contact 4: (N/O)

M8 female 3-pole screw-plug terminals
max. 1.5 mm²/AWG 16



M8 female 3-pole spring clamp terminals
max. 0.5/1.5 mm²
(AWG20/AWG 16)



M8 female 3-pole M16 male 14-pole



with LED for PNP-signals 24 V DC

Distribution box 8-way

Art.-No.
3827560

Art.-No.
3827562

Art.-No.
3827564

Accessories

Blind plug for empty sockets	plastic		3858627
Label plates	1 strip = 22 pieces, (Murrplastik KPX 5/10-5)		996047
Coding elements for screw-plug terminals	for 6 codings (only for Art.-No. 3827560)		996054
Female connector M16	chapter 1.5.		

Notes

Technical data from chapter 1.2. onwards.

Distribution box for sensors and actuators

- slim housing
- combi mounting
- with pre-wired cable

MVPS8, single-row

4-, 6-, 8-, 10-way
with pre-wired cable



Contact layout

General:

M8 female
3-pole

Contact 1: (+)

Contact 3: (-)

Contact 4: (N/O)



with LED for PNP-signals 24 V DC

Ordering data		Art.-No.	Art.-No.	Art.-No.	Art.-No.
Connection cable	Cable length	4-way	6-way	8-way	10-way
PUR/PVC	5.0 m	3827240	3827242	3827244	3827246
n x 0.34/2 x 0.75 mm ²	10.0 m	3827241	3827243	3827245	3827247
Accessories					Art.-No.
Blind plug for empty sockets		plastic			3858627
Label plates		1 strip = 22 pieces, (Murrplastik KPX 5/10-5)			996047

Notes

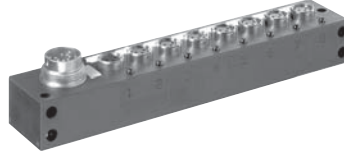
Other versions on request.
Technical data from chapter 1.2. onwards.

Distribution box for sensors and actuators

- slim housing
- combi mounting
- with 8...14-pole plug connector M16

MVPS8, single-row

4-, 6-, 8-, 10-way
with plug connector M16



Contact layout

General:	M8 female 3-pole	M16 male 8-pole	M8 female 3-pole	M16 male 10-pole	M8 female 3-pole	M16 male 12-pole	M8 female 3-pole	M16 male 14-pole
Contact 1: (+)								
Contact 3: (-)								
Contact 4: (N/O)								
with LED for PNP-signals 24 V DC								
Ordering data		Art.-No.		Art.-No.		Art.-No.		Art.-No.
	4-way	3827248	6-way	3827249	8-way	3827250	10-way	3827251
Accessories								Art.-No.
Blind plug for empty sockets	plastic							3858627
Label plates	1 strip = 22 pieces, (Murrplastik KPX 5/10-5)							996047
Female connector M16	chapter 1.5							

Notes

Technical data from chapter 1.2. onwards.